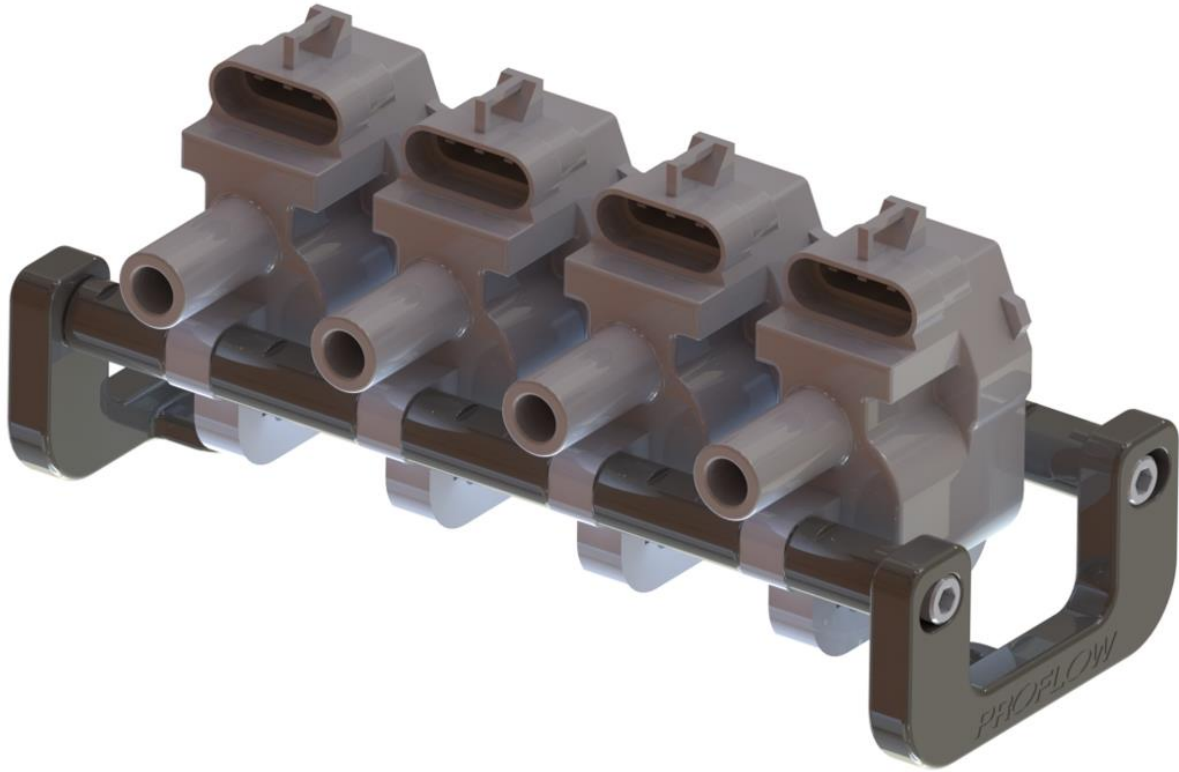




## Installation Manual

### LS1/LS2/LS3 Coil Relocation Bracket Kit

PFERC-900BK



Included Items	QTY
PFERC-900BK Bracket	4
PFERC-900BK Spacer 1	8
PFERC-900BK Spacer 2	8
PFERC-900BK Spacer 3	4
M6 Hexagon Socket Head Cap Screw ISO 4762	8

**WARNING:** PLEASE READ ALL INSTRUCTIONS BEFORE PROCEEDING. PROFLOW WILL NOT BE RESPONSIBLE FOR ANY DAMAGE AS A RESULT OF THE INCORRECT INSTALLATION OF THIS PRODUCT. IT IS RECOMMENDED THAT A QUALIFIED AUTOMOTIVE TECHNICIAN PERFORMS THIS INSTALLATION.

**PROFLOW.COM.AU**

EMAIL: [sales@proflow.com.au](mailto:sales@proflow.com.au)  
PHONE: 1300 879 879

## Description

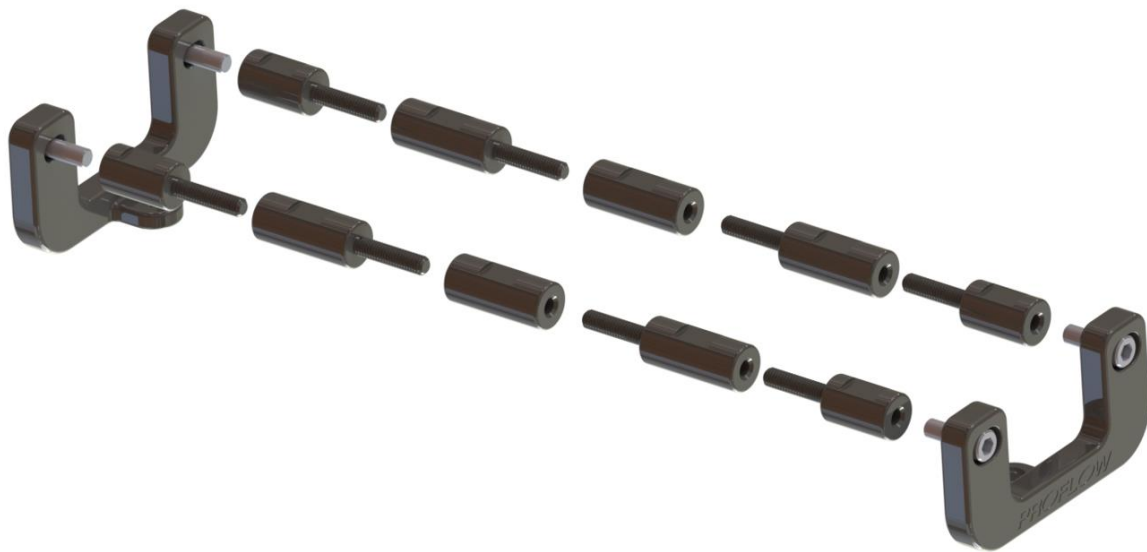
The Proflow Performance LS coil relocation bracket kit is an innovative design that allows the option to mount your ignition coils virtually anywhere in the car. This kit accomodates both early and late styled ignition coil bodies, so this can be used with all LS1/LS2/LS3/LS6/LS7 styled coils.

It utilizes two mounting tabs located on the bottom of the brackets to secure the coils. It is recommended to fasten the socket head screws with a low grade loctite to ensure they do not loosen over time due to vibration.

## Typical installation:

1. Disconnect harnesses from the coils.
2. Remove coils from their existing location on the valve covers.
3. Install the coils onto the bracket using the figures on page 1 and 2 as a reference.
4. Mount the coil bracket assembly onto a suitable location in the engine bay away from direct heat sources.
5. Reconnect the wiring harnesses to the coils. Coil extension cables may be required.

## ***EXPLODED ASSEMBLY VIEW***



### **PROFLOW LIMITED WARRANTY**

This Proflow product is warranted to be free from defects in materials and workmanship for a period of one year from the original date of purchase. No warranty claim will be valid without authentic, dated proof of purchase. This warranty is to the original retail purchaser and none other and is available directly from Proflow and not through any point of distribution or purchase.