



## Installation Instructions

### RB Cylinder Head Oil Drain Kit

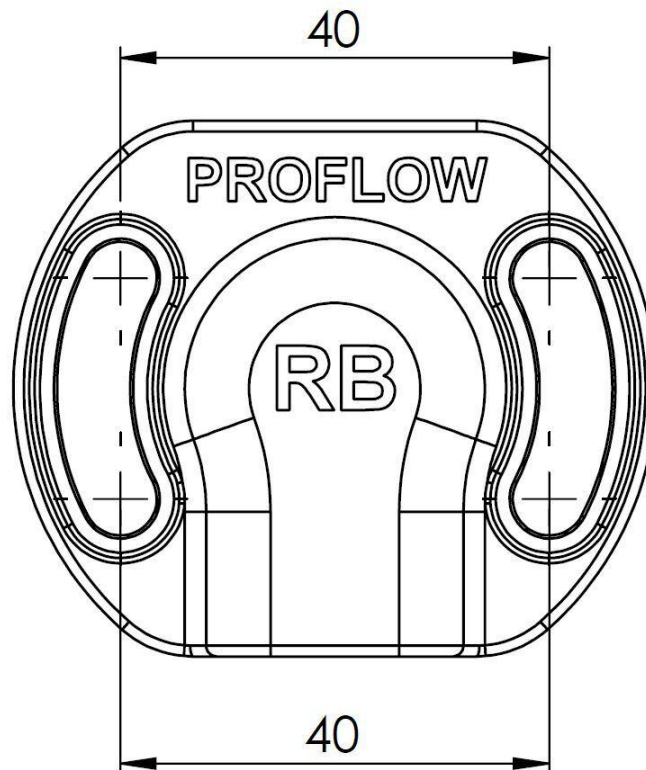
#### PFE-RBOD-08

Included Items	QTY
Cylinder Head Adapter Fitting -08AN (O-ring included)	1
PFE503-08BK 90 Degree Full Flow Fitting -10AN	1
PFE502-08BK 45 Degree Full Flow Fitting -10AN	1
PFE920-10-08BK -08AN ORB To -10AN Straight Fitting	1
PFE100-10R-1 Stainless Braided Hose NBR 1m	1
PFE999-10D Aluminium Weld-On Fitting -10AN	1
M6 x 12mm Socket Head Cap Screw ISO 4762	2

**WARNING:** PLEASE READ ALL INSTRUCTIONS BEFORE PROCEEDING. PROFLOW WILL NOT BE RESPONSIBLE FOR ANY DAMAGE AS A RESULT OF THE INCORRECT INSTALLATION OF THIS PRODUCT. IT IS RECOMMENDED THAT A QUALIFIED AUTOMOTIVE TECHNICIAN PERFORMS THIS INSTALLATION.

This cylinder head adapter kit was designed to solve the excessive oil build up that popular RB engines experience while performing at high RPM's. It helps drain built-up oil in the cylinder head, back to the oil pan where it would usually be forced into catch cans, causing them to fill up rather quickly. This is especially important if your catch can is full and cannot hold any more oil while on track. To secure the adapter, two M6 holes are to be tapped into the back of the cylinder head.

1. Remove the top welch plug in the back of the cylinder head in order to fit your new cylinder head oil drain fitting. Ensure there is no debris surrounding the area before proceeding.
2. Insert the oil drain into the cylinder head as a template, and tap and drill two M6 x 1mm threads into the head (dimensions shown below). Clear all swarf around this area.
3. It is recommended to screw the straight fitting into the cylinder head adapter first as clearance for fasteners may be an issue if the block is still in the car.
4. Lubricate the o-ring on the bottom of the adapter and firmly press it into the head, ensuring the o-ring does not kink.
5. Spin the adapter so it enables clearance for the hose and fittings to run to the oil pan. Once you have selected a position, secure it by fastening the 2 supplied M6 screws while using a medium grade loctite.
6. Plumb the rest of the oil drain system by attaching the full flow fittings to the braided hose and welding on the aluminium fitting to the oil pan. Either angled fitting can be screw on the oil pan fitting depending on clearances.



---

**PROFLOW LIMITED WARRANTY**

**PROFLOW.COM.AU**

EMAIL: [sales@proflow.com.au](mailto:sales@proflow.com.au)  
PHONE: 1300 879 879

This Proflow product is warranted to be free from defects in materials and workmanship for a period of one year from the original date of purchase. No warranty claim will be valid without authentic, dated proof of purchase. This warranty is to the original retail purchaser and none other and is available directly from Proflow and not through any point of distribution or purchase.