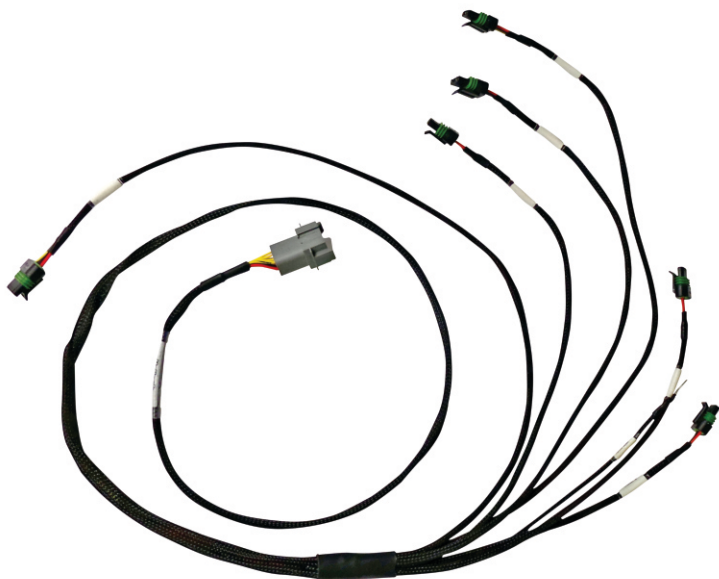




**ELITE 2000/2500**  
*Universal Inline 6 Cylinder*  
*High Output IGN-1A Coil*  
*Terminated Ignition Harness*  
*(HT - 130337)*



# Harness Overview

The Haltech Universal Inline 6 Ignition Harness connects to the Haltech IGN-1A ignition coils (HT-020114).

Installation of this harness is as follows:

- Position the harness in the engine bay / cabin
- Connect the Haltech Universal Inline 6 Ignition Harness to the terminated engine harness by the opposing 8 position connector within the harness labelled as "Ignition Outputs"
- Connect the Haltech IGN-1A coils (HT-020114) to the ignition harness. All outputs are labelled on the harness. Please connect these outputs to their respective cylinder / coil
- Connect the Main Power Ground to a cylinder head.

Please Refer to the included quick start guide for more information.



**Figure 1 - Haltech IGN-1A Ignition Harness Main Power Ground Connection**

# Software Setup

The Haltech IGN-1A ignition coils should be setup as follows within the Haltech ESP software ignition setup page (Figure 2):

**Ignition Mode:** Direct Fire

**Edge:** Falling Edge

**Dwell Mode:** Constant Charge

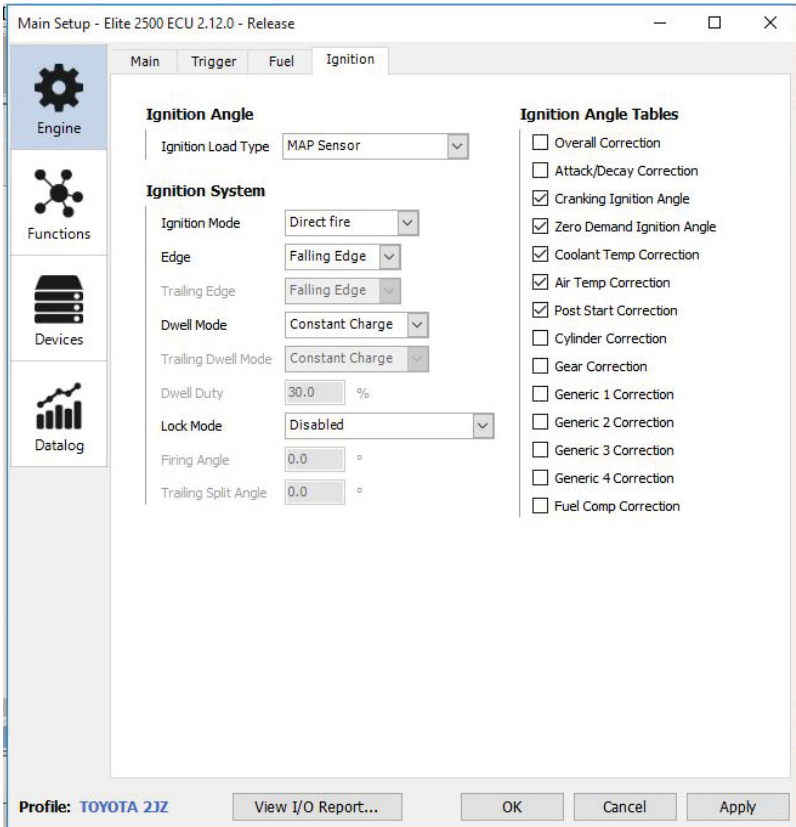


Figure 2 - Ignition Setup Page

Continue to next page for Dwell Time setup information

# Software Setup (Continued)

## Dwell Time

To setup a dwell time for ignition coils, double-click on Ignition System sub-menu within the ECU Navigator and select Dwell Time tab. An ignition dwell time table will appear on the screen. A typical dwell time table will have one axis. This axis is Battery Voltage. The dwell times for Haltech IGN-1A coils are outlined in the table below (Figure 3).

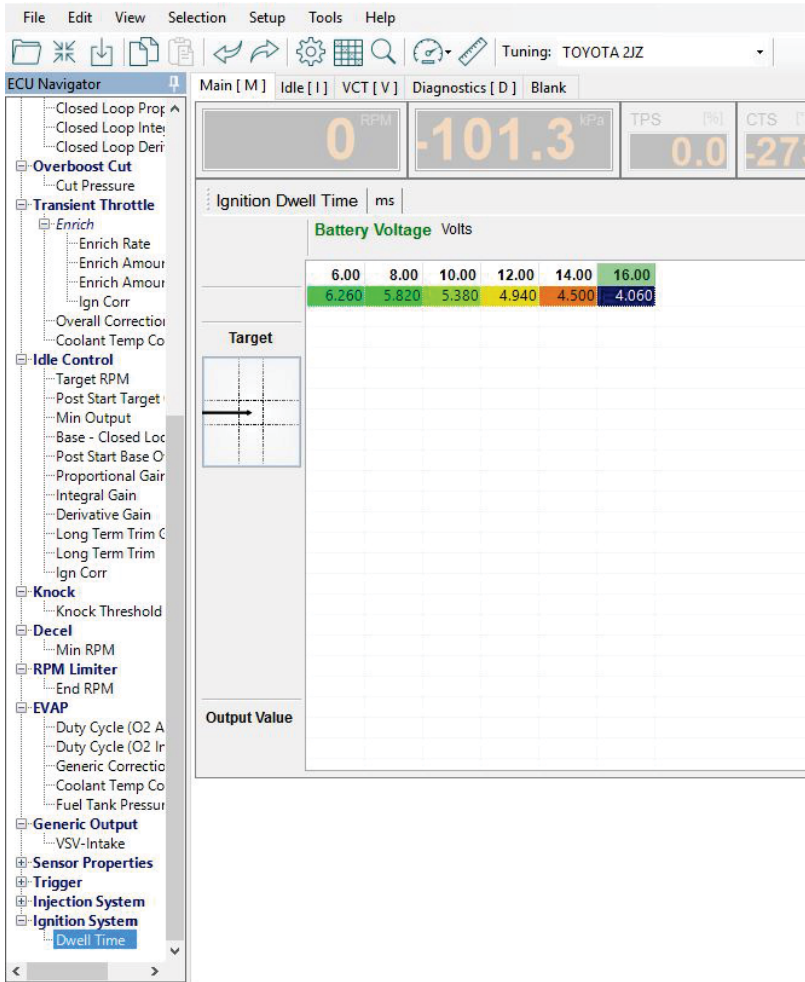
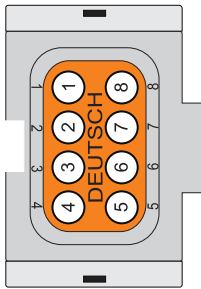


Figure 3 - Dwell Time Table

**Warning!**  
Damage can occur to the coil if the dwell time is set too high.  
Please ensure your dwell time is set based on the coil manufacturers recommendations



# Harness Diagram



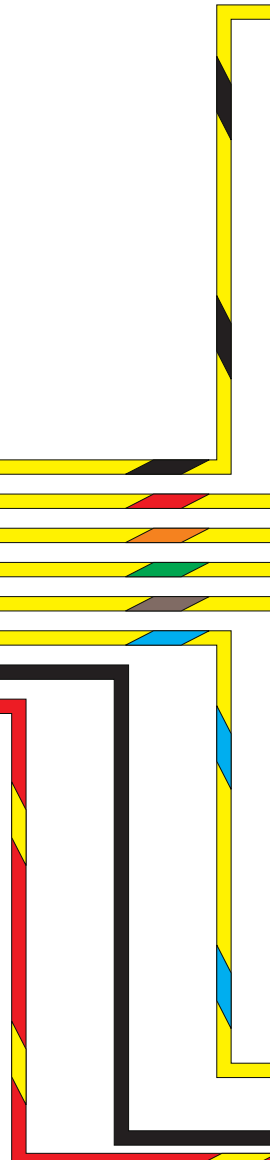
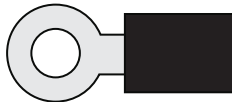
Wire Side View

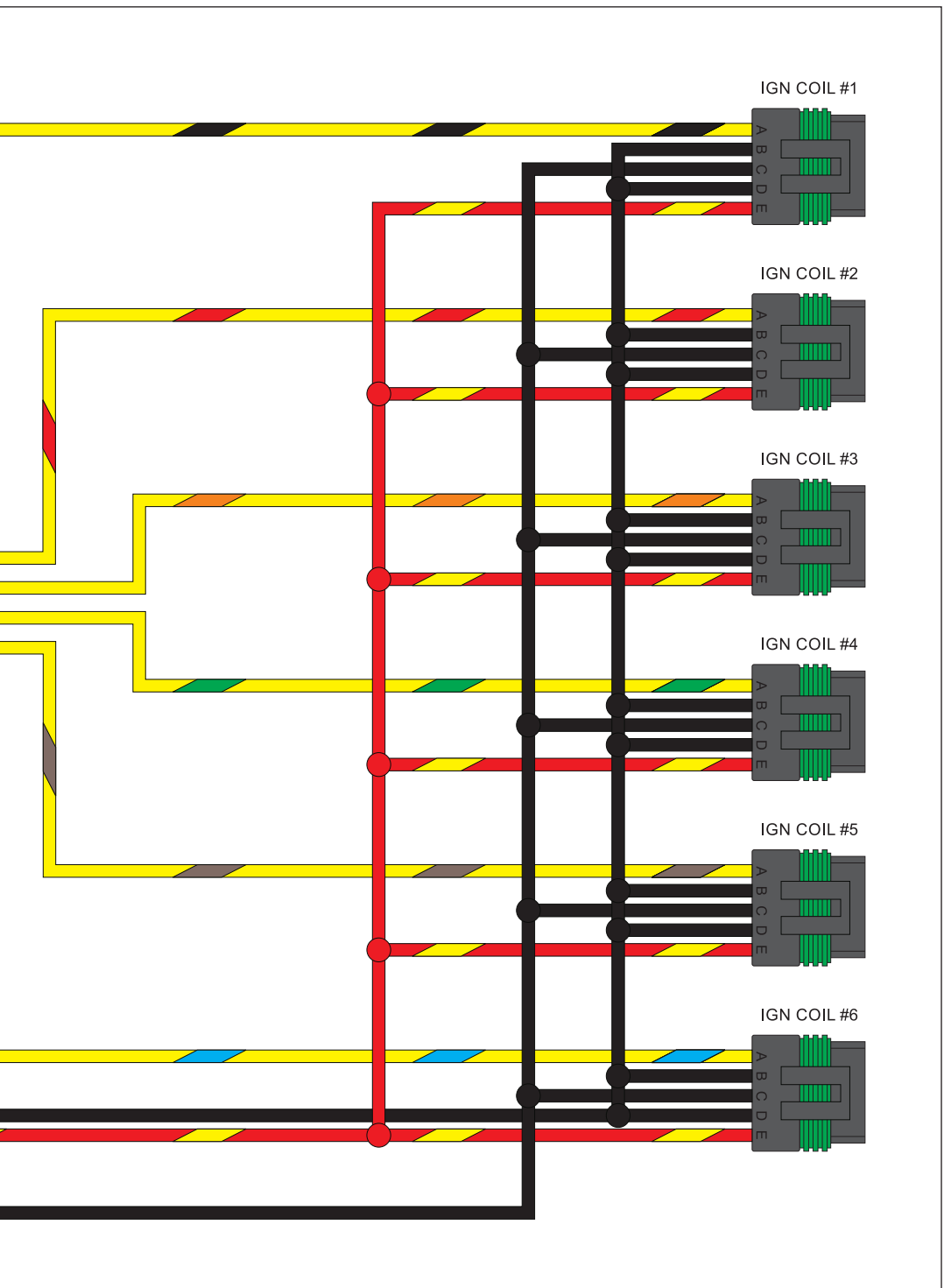
**TO IGNITION  
BREAKOUT**

- IGN #1 OUTPUT FROM ECU
- IGN #2 OUTPUT FROM ECU
- IGN #3 OUTPUT FROM ECU
- IGN #4 OUTPUT FROM ECU
- IGN #5 OUTPUT FROM ECU
- IGN #6 OUTPUT FROM ECU
- BATTERY GROUND
- SWITCHED +12V DC



**Cylinder Head Ground**







### Need more help?



Intl: +61 2 9729 0999  
USA: +1 888 298 8116



Intl: [support@haltech.com](mailto:support@haltech.com)  
USA: [usasupport@haltech.com](mailto:usasupport@haltech.com)



[www.haltech.com](http://www.haltech.com)



[/Haltechecu](https://www.youtube.com/Haltechecu)



[/HaltechEngineManagement](https://www.facebook.com/HaltechEngineManagement)